

Luton

Town Football Club

Match Day Magazine £1.50

TONIGHTS'
MATCH SPONSORS
**RADLEY SHAW
LIMITED**



Swindon Town

Wednesday 17th March 1993

Kick-off 7.45pm



BARCLAYS

LEAGUE DIVISION ONE

We now see our game at the crossroads



MANAGER'S VIEWPOINT BY DAVID PLEAT

We warmly welcome Swindon Town – their officials, supporters, players and particularly their management team who have done so much to illuminate our league this season.

Glen Hoddle has always epitomised the importance of technical excellence, for the game has been full of 'sweaters' and 'strainers'. Yet without the talent you would have no crowds. No one under-estimates the importance of hard work and team play, but we need the charismatic and clever players to maintain crowds and give the future generation of footballers standards to emulate.

Early 1993 clearly shows the game at the crossroads. The gulf between the 'have's' and the 'have not's' has widened dramatically with the commercial ventures now in place. Swindon have just been forced to sell David Kerslake for £500,000 to Leeds.

No amount of money can replace the necessity to develop good players. They will not develop in front of armchairs watching the game on television, or playing video recordings and having no grass left to play on. We all understand the need to keep the game viable but we must not ignore the fact that to attract people and attention we need to have a vibrant game with good players. We should spend more on the development of youngsters, higher standards of coaching and look to the future rather than the immediate.

The directors of 'bigger' clubs must govern with their heads as well as their hearts; 90% of decisions voted for are voted with self

interest in mind above the good of the game. There is a conflict of administration, and a concern over television's control. When I think of football I think of Halifax and Hartlepool as well as Arsenal and Tottenham. Somehow we must bring the correct and genuine 'think tank' to the table, to reconstruct football in such a way so that it becomes less of a handicap to survive and more of a plea-

"WE SHOULD SPEND MORE ON THE DEVELOPMENT OF YOUNGSTERS AND LOOK TO THE FUTURE RATHER THAN THE IMMEDIATE"

sure to play. It is to the credit of Division One this season that teams such as Millwall, Newcastle, Grimsby Portsmouth, Tranmere, West Ham, Charlton and of course, tonight's visitors, have played in such a fashion that they give the impression that they have taken some of the fear out of the game.

There is a frantic pace to many Premier games and a squeezing of space which makes it even more difficult for talented players to express themselves. This is born out of the fear of being relegated and losing out on the money. It was marvellous to see an open game full of not only commitment but good passing and skill at Old Trafford last Sunday. This



Kerry Dixon skips past the challenge of England under-21 defender Andy Awford at Fratton Park earlier this month.

is not surprising in view of the fact that the away team is managed by Ron Atkinson. Our experience at Luton quite clearly shows, that unless you can support the ambition, you should think twice before you have stars in your eyes – because the judgement day can cost fortunes.

If Glen hoddle should play today then you will have the good fortune to see a player not only with talent, but the dedication to survive the fury of the English game and a man with the courage of his convictions. No player who wants to achieve success has any chance without being fully committed and dedicated.

It will be that dedication that will drive on our young Centre Back Darren Salton to recover from his accident. Yesterday he celebrated his 21st birthday and is hoping to be with us on Saturday and given his thanks to all our supporters who have given him encouragement.

Our recent form went out of the window at Grimsby where we played as though summer had arrived. phil Gray's 16th league goal in 34 league games is a magnificent return in his first full season against tough defences but it will little consolation. We need to return to me form that has transformed the early season difficulties. Tonights game is an important one for both sides and if we do ourselves justice I sincerely hope you will return on Saturday when we have another vital game with Bristol Rovers.

A mixed week, but we're still in confident mood



CAPTAIN'S LOG BY TREVOR PEAKE

Our results during the past week have been mixed, but we enter tonight's game against Swindon looking to build on our recent good home form.

The result last week against Oxford United looked very convincing, but those who went to the match will know that for 80 minutes of the game it looked like we were heading for only a draw. Our defence was injury-riddled, with Julian and Marvin both carrying knocks and myself feeling the effects of a flu virus.

To the team's credit, however, we battled on, created chances late into the game and took our goals very well. Scott Oakes's volley was a tremendous effort and our first goal by David Preece was one to savour. I wonder how many goals he has scored in his career with his head!

We went into the game against Grimsby on Saturday, again carrying the defence and with myself out of the match with this dreaded flu bug. I felt awful and if I had played, I would have only let the side down. David Greene stepped in to make his debut and I hear, he did well. I'm sure he'll go on to establish himself in the side in the future.

We knew what to expect from Grimsby. They play football the way it should be played



Julian James has had a consistent season.

and have done extremely well this season. By all accounts, we applied ourselves well and we were looking to claw ourselves back until they scored their second goal. Then Julian was sent off and they scored again to kill the game. It was disappointing to see Julian go. It is the only black spot to his fine season, a season which has seen him improve his all-round game tremendously.

Tonight will be another stiff test for us. Swindon are flying at the moment and it is credit to their style of football that they are on the verge of a Premier League place next season. We like to think that we play the same way, so all fans should anticipate a good game.

Our home form has been good this year and I am confident that we can build on that victory against Oxford.

Enjoy the game.



The Station with
More Winning Ways

The Hot FM



Universal Salvage Auctions

Welcome to the 'family club'

Two groups join in the fun at Kenilworth Road tonight.

Tonight's guests are from St Joseph's Boy Scouts and Ramridge Rangers F.C. We give them both a warm welcome to Kenilworth Road on behalf of Luton Town Football Club. They are here, courtesy of our community programme, sponsored by Universal Salvage Auctions (USA) and our associate sponsor Kenning.

"St Joseph's Boy Scouts have three various divisions, the Beavers who are six to eight year olds, the Cubs who are eight to ten year olds and then finally the Scouts," said Mrs Elaine May, the Scouts' Akela.

Mrs May, who also works for USA at their Wootton headquarters, volunteered to help with the group along with Steve Murdock, George Chick and Maxine Smiley, following a threatened closure of their Blundell Road hut last year. She said: "My own two sons are both Cubs and when I see how much they get out of it and how much they learn, it would have been a terrible shame for it to close."

Mrs May started as the new Akela in January after Sheila Mason decided to take a back seat role after ten years.

"All the boys coming along today are from the Cub division and are very much looking forward to seeing a live football match," she said.

Our second group tonight are from Ramridge Rangers F.C. "Ramridge have a total of ten football squads, four under-12 teams and six over-12 teams, so as you can imagine, it has been very difficult to choose the limited number we were allowed to bring along," stated Chairman Gary Carter.

He continued: "The teams all play in the Bovis Homes Chiltern Youth League and the under-10 side reached the Jim Restall Cup Final after only one year in the league."

The club was actually founded by Gary and a friend, Clive



Members of Ferrars Junior School are pictured with Gary Hooper before our game with Oxford United last week.

Bowler, in 1986 and had progressed into a large club.

"When we first started, we didn't expect the response to be so great, but it gives us great satisfaction to see all these kids enjoying their football."

Both Ramridge Rangers and St Joseph's would like to thank Luton Town for all the encouragement and support they have been given over the years. They would also like to thank Universal Salvage Auctions and Kenning for the superb scheme which has been set up to bring the community together.

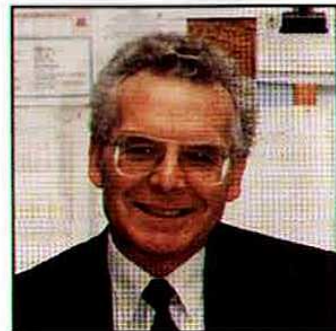
If you would like further information on the USA/Luton Town community programme, please contact Gary Hooper, Community Liaison Officer, Luton Town FC, Kenilworth Road Stadium, 1 Maple Road, Luton, Beds LU4 8AW.

TELEPHONE: 0234 766500 • FAX: 0234 766200

WOBURN ROAD • WOOTTON • BEDS • MK43 9EJ



Thank-you for your generous contributions



ON THE INSIDE BY JOHN SMYLIE

Kenilworth Road Stadium,
1, Maple Road, Luton, Beds
LU4 8AW.
Tel: (0582) 411622
Fax: (0582) 405070.
Clubcall: 0898 12 11 23 (48p
per min peak, 36p off peak)

President: E.S. Pearson

Chairman: R.J. Smith

Managing Director:
D.A. Kohler, Bsc. (Hons) ARICS

Directors: P. Collins,
E.S. Pearson, H. Richardson,
N. Terry

Vice Presidents: R.L. Banks,
C. Bygraves, R. Safranek,
E. Waller, J. Hudson,
D. Ludlow.

Secretary: John Smylie

Manager: David Pleat

Coaches: John Moore,
Wayne Turner, Terry Westley

Physiotherapist: Andy McDade

Youth Development Officer:
Paul Lowe

Scouting: Les Shannon

Commercial Executive:
John Buttle

Commercial Sales: Andy King

Medical Officer: Dr Bill Berry

Club Dentist: A. Chris BDS (Syd)

This evening we extend a warm welcome to the directors, management, players and supporters of Swindon Town F.C.

■ This evening's fixture was originally scheduled to be played on Boxing Day morning last year, but due to the pitch being unplayable following the severe frosts that we were experiencing at that time, the match was postponed and re-scheduled for tonight.

■ I would like to thank all those who contributed to last week's ground collection in memory of the late Bobby Moore. A total of £939.78p was realised and a remittance for this amount has been forwarded to the Imperial Cancer Research Fund who are the nominated charity to benefit.

■ Thanks must also go to all the collectors: The Luton Lions Club, Hillsborough Hatters



Martin Williams, Kerry Dixon and our mascot Alex Reyland, are pictured presenting Peter Brown, secretary of the Bedfordshire F.A. with a pennant in recognition of the Town holding the recent under-21 fixture between England and San Marino.

Junior Football Club, the Luton Rotary Club, and also the organiser David Griffin.

■ Anyone over 18 who is unmarried and not living with a partner is invited along to the Strathmore Hotel, Luton tomorrow evening to audition to take part as a contestant in a forthcoming series of 'Blind Date'. The criteria is that you must have a sense of fun, a good personality and, of course, the courage to go along. Who knows, if selected you could go on and be successful, winning a nice holiday break in the bargain.

Honours

Littlewoods Cup winners 1987-88
FA Cup finalists 1958-59
Littlewoods Cup finalists 1988-89
Simod Cup finalists 1987-88
Champions - Division Three (S) 1936-37
Champions - Division Four 1967-68
Champions - Division Two 1981-82

Editorial and pictures: Collings Communications/Apex Photography,
PR and Media Consultants Hitchin.
Tel: 0462 441068 Fax: 0462 441069

Design and print: McLeod Warner Limited, Luton. Tel: 0582 38389

Let's build again says Alec



PLAYER INTERVIEW WITH ALEC CHAMBERLAIN

Goalkeeper Alec Chamberlain has re-built his Town career after a successful loan spell at Chelsea earlier in the season, and his recent form suggests he is enjoying life at Kenilworth Road.

Luton Town's recent impressive run of seven consecutive league clean sheets - equalling the club record - appears to have been the turning point in a long, hard season for the Hatters. One player who has had a major say in the run is goalkeeper Alec Chamberlain.

The spotlight has inevitably fallen on the former Colchester and Everton stopper in recent weeks, which is a far cry from earlier in the season when he felt his days at the club were numbered and he was sent on loan to Stamford Bridge.

"No doubt that little spell I had at Chelsea helped me regain my confidence after playing regularly for their successful reserve side," he said. "Since my return I have been able to repeat the form I showed the season before last, which was probably my best for Luton Town."

"Since December we have had a settled side and in particular a settled defence which has made my job more easier. I know what the four players in front of me are doing, they know what is expected of themselves and therefore we all feel confident as a unit, which I think has shown."

That solid unit helped to equal the 'clean sheets' record last month after our 2-0 home win against Charlton and it is a

run Alec is particularly pleased about. He said: "I am proud to have been a member of the side which helped break the record and it was quite some achievement, but all along I said that the results were more important than the clean sheets, considering our league position."

The record came to an end with the 2-2 home draw with Barnsley on February 27, and this was where the unbeaten run ended as well. The following week at Fratton Park, the Hatters suffered a rare 1993 defeat which to all who saw the match would say was an extremely unlucky result after a bad refereeing decision led to Pompey's winner.

However, the side soon returned to winning ways against Oxford and it is the spirit the side showed that evening which Alec says is needed for the team to continue its climb up the table.

"If we can continue to work for each other I am sure we can stay away from the relegation zone and out of trouble. We have the ability here and we have proved that we are a good enough outfit in recent weeks."

"It would be nice to establish another 'clean sheet' run, but like I said, I'm not bothered if the odd goal goes in, just as long as we win!"



ACTION REPLAY

From: Fratton Park
Date: March 6, 1993

PORTSMOUTH 2
(WHITTINGHAM, ASPINALL (PEN))

LUTON TOWN 1 (GRAY)

Attendance: 10,457

PICTURES BY JOSH LEVY

*Kerry Dixon
runs through
the heart of the
P o m p e y
defence.*



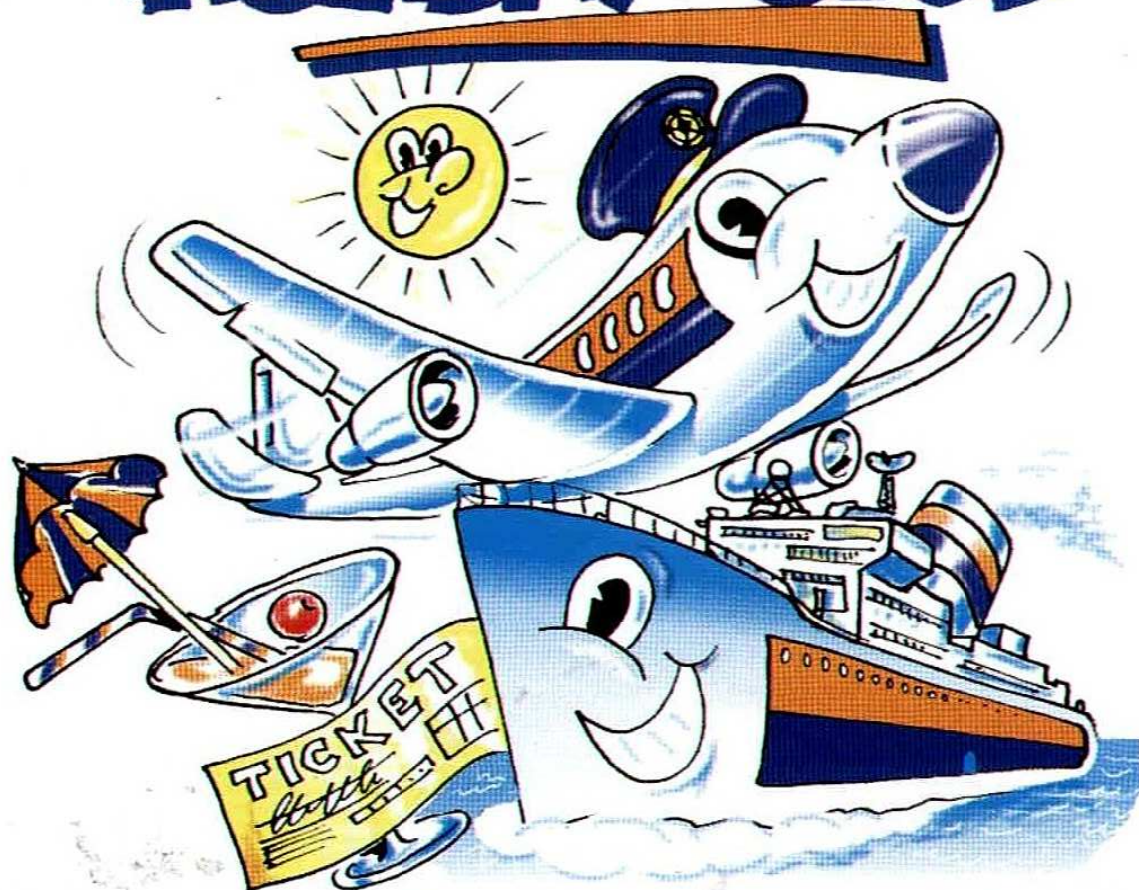


Scott Oakes fires a determined shot goalwards.



Paul Telfer takes on Luton 'old boy' Ray Daniel.

LUTON TOWN FOOTBALL HOLIDAY CLUB



Enjoy some Caribbean sunshine in
ST LUCIA ONLY £439
per person for two weeks

- ★ Beachfront Hotel
- ★ FREE Watersports
- ★ Daily Entertainment

Only two dates left at this special price
15 and 29 April

Ring SUE today on 0582 435020
OR visit the Skyline Travel Shop at London Luton Airport.
seven days a week

Open 'til seven Monday to Friday



LTFC Holiday Club is operated by Luton Town Football Club in association with Worlds End Travel Ltd. ABTA No. 76029.



Latest Box Office news



BY CHERRY NEWBERY

Luton Town v Bristol Rovers

BARCLAYS LEAGUE DIVISION ONE

Saturday, March 20, 1993 - Kick-off 3.00 pm

SPECIAL "LADIES DAY" FREE OFFER

The club is offering all ladies attending this match FREE tickets providing another ticket is purchased at the same time (hopefully by the accompanying male!).

We would ask that in order to avoid disappointment, these tickets are obtained early.

Other tickets for this match are now on sale at normal league prices. Normal guesting facilities apply.

Millwall v Luton Town

BARCLAYS LEAGUE DIVISION ONE

Wednesday, March 24, 1993 - Kick-off 7.30 pm

Seats priced at £13.00 (no concessions) are only available from the Ticket Office in Kenilworth Road until noon on Wednesday, March 24. Seats will not be available at Millwall.

Standing £8.00 (no concessions) pay on the turnstile on the night only.

Luton Town v Cambridge United

BARCLAYS LEAGUE DIVISION ONE

Saturday, March 27, 1993 - Kick-off 3.00 pm

Tickets for this match are on sale at the discounted price. Normal guesting facilities apply.

Watford v Luton Town

BARCLAYS LEAGUE DIVISION ONE

Saturday, April 3, 1993, Kick-off 3.00 pm

Seats for this match are ONLY available from the Ticket Office in Kenilworth Road, price £10.00 (no concessions) until 5.00 pm on Friday, April 2. Seats are not available at Vicarage Road.

Standing pay at the turnstile on the day of the match only, price £7.00 (no concessions).

Easter Holiday 1993 Ticket Office Hours

April 9th Good Friday - Closed

April 10th Easter Saturday 10.00 am - 1.00 pm

April 12th Bank Holiday Monday 10.00 am - 1.00 pm

Travelling to...

Millwall

Address: The Den, Cold Blow Lane, London SE14 5RH.

Telephone: 071 639 3143.

Take the M1 then A1 south. Follow signs to City, to cross Tower Bridge. After 1 mile at roundabout, take the first exit (signs A2). After 1.8 miles turn left into Avonley Road then take the third exit right into Edric Road. At the end, turn right and then left into Cold Blow Lane.

Nearest Railway: New Cross Gate / South Bermondsey.

Watford

Address: Vicarage Road, Watford, Herts WD1 8ER.

Telephone: 0923 30933.

Take the M1 south to junction 6, then to Watford on A405, A41 and A411. Take the A412 towards Slough and turn left into Harwoods Road. Turn left at end for Vicarage Road.

Nearest Railway: Watford Junction or Watford High Street.

Bobbers Travel Club

Coaches for the trip to MILLWALL will cost £4.80 adults and £3.80 children/OAP's. Coaches will depart from Cranfield at 3.45 pm and from Luton at 4.45 pm with the normal pick-up points en route.

Coaches for the trip to WATFORD will cost £4.50 adults and £3.60 children/OAP's. Coaches will depart from Cranfield at 11.45 am and from Luton at 12.45 pm, again with the normal pick-up points en route.

All bookings and further information can be made by telephoning Paul Deason on (0234) 750996. Alternatively, you can book by seeing Paul or any other BTC member at the Ticket Kiosk journey from the previous match.

Passing game proves successful for the Robins



SWINDON TOWN F.C 1992-93

■ Swindon Town visit Kenilworth Road this evening riding high in Division One after a string of results which, at the time of writing, have seen the club win their last four matches. The west country club, which has been acknowledged this season for its style of 'total' football under player/manager Glenn Hoddle, has made rapid strides in recent seasons and is now on the verge of a possible Premier League debut.

■ Hoddle, appointed for his first managerial role last season, was an artist in midfield during a career that spanned almost two decades with Tottenham and Monaco. He dictated games with his passing ability, and as player/manager of the Robins, he expects the same from his players. "The game needs passing teams like us," says Barclays Manager of the Month for February, Mr Hoddle. "My view is that the game should be played the way Spurs have always played it. I have been lucky at Swindon because when I took over here, I already had players who could play with the ball."

■ With many teams opting for the 'long ball' style these days, Swindon have proved that results can be obtained by playing total football.

Their recent string of results include home victories against fellow-promotion chasers Tranmere Rovers (2-0) and Portsmouth (1-0) and an impressive 4-0 drubbing of Watford 11 days ago. Another positive sign for the club has been the way the goals have been spread around. Although striker Craig Maskell has amassed an impressive 19-goal tally this season, defenders Paul Bodin and Shaun Taylor will be looking to break double figures before the end of the season, and former Hatter Steve White has scored a brace of goals in recent weeks.

■ Swindon Town F.C. was formed in 1881 by Reverend William Pitt who was captain of local club Spartans (an offshoot of a cricket club). Spartans then merged with St Mark's Young Men's Society, to form Swindon Town with the club joining the Southern League. They made their debut in a Division Three match against Luton Town winning 9-1! This result still stands as the club's record victory. Honours for the Robins have been fairly limited, with their greatest success being the League Cup triumph against Arsenal in 1969. They have also won the Division Four title on one occasion in 1986.



Back row (left to right): John Moncur, Darren Hall, Fraser Digby, Paul Hunt, Nicky Hammond, David Bennett, Craig Maskell, Steve White.

Middle row (left to right): John Trollope (youth team manager), Ross McLaren, Nicky Summerbee, Colin Calderwood, Shaun Taylor, Adrian Viveash, David Mitchell, Andrew Thomson, Kevin Horlock, Andy Rowland (reserve team manager).

Front row (left to right): Kevin Morris (physiotherapist), Martin Ling, David Kerslake, Wayne O'Sullivan, Glenn Hoddle (player/manager), John Gorman (assistant manager), Paul Bodin, Shaun Close, Micky Hazard, Eddie Buckley (kit manager).

ROBINS ON PARADE

NICKY HAMMOND (goalkeeper) - Nicky made 31 appearances for the Robins last season, by far his best return since joining the club five seasons ago. He joined the club on a free transfer from Arsenal, having previously had loan spells with Bristol Rovers, Aberdeen and Peterborough United.

ADRIAN VIVEASH (defender) - Adrian progressed through the junior ranks at the County Ground and established himself in the first team last season. He will be looking to re-claim a spot in the side following David Kerslake's departure.

PAUL BODIN (defender) - Welsh international full-back, Paul is in his second spell at the County Ground, having originally signed from Newport County for £25,000 in 1988. He joined Crystal Palace for £550,000 in March 1991, but returned to Swindon ten months later.

COLIN CALDERWOOD (defender) - Colin is the club captain and currently the longest-serving Town player, now in his eighth season at Swindon. The only surviving member of the Town's Fourth Division championship winning side of 1985/86, Colin has made maximum appearances in four out of seven seasons.

NICKY SUMMERBEE (defender) - Nicky made his Town debut in the final fixture of the 1990/91 season and went on to make 20 appearances last term. He has an excellent football pedigree, because his father Mike Summerbee, grandfather and great uncle all played league football.

SHAUN TAYLOR (defender) - A £200,000 signing from Exeter City a year ago, Shaun was voted Swindon's player of the year last season. He came into league football at the age of 23, joining the Grecians from Western League Bideford Town.

ROSS MACLAREN (midfield) - A £140,000 signing from Derby County in 1988, Ross won a Second Division championship medal at the Baseball Ground. He started his career with Shrewsbury Town and has played nearly 450 games since his debut in 1980.

MARTIN LING (midfield) - Martin re-joined Swindon a year ago after almost five years with Southend United. A former Exeter City apprentice, Martin was at the County Ground for 93 days during 1986, making only two senior appearances. In and out of the side last season, Martin has had an extended run this term.

MICKY HAZARD (midfield) - Signed from Portsmouth in September 1990 for £130,000 after spending eight years at White Hart Lane. During this time he collected both FA Cup and UEFA Cup winners' medals. A £300,000 move across London, to Chelsea, followed in 1985. Micky missed just two league games last season.

JOHN MONCUR (midfield) - A transfer-deadline £80,000 signing from Tottenham last season, John spent eight years at White Hart Lane after completing his apprenticeship. He made his league debut on loan at Doncaster in 1986 and unable to gain a regular first team place, spent further loan spells at Cambridge, Ipswich and Portsmouth.

CRAIG MASKELL (forward) - Craig was signed from Reading for £250,000 during the summer. He was top scorer at Elm Park last season with 15 goals, and has continued in the same vein this term, currently heading the County scoring list. He began his career with Southampton and has also served Huddersfield.

DAVID MITCHELL (forward) - Capped 17 times for Australia, David joined the Town a year ago from Chelsea for a nominal fee and found the net eight times. A much travelled goalscorer, he has also seen service with Eintracht Frankfurt, Rangers, Feyenoord and Newcastle.

STEVE WHITE (forward) - A free transfer signing from Bristol Rovers a year ago, Steve reached a 100 goal milestone for the club last season, before being sidelined with a back injury. Despite playing only 28 games, he still scored 15 goals. He began his career with Rovers and has also served Luton and Charlton.

MEET THE BOSS

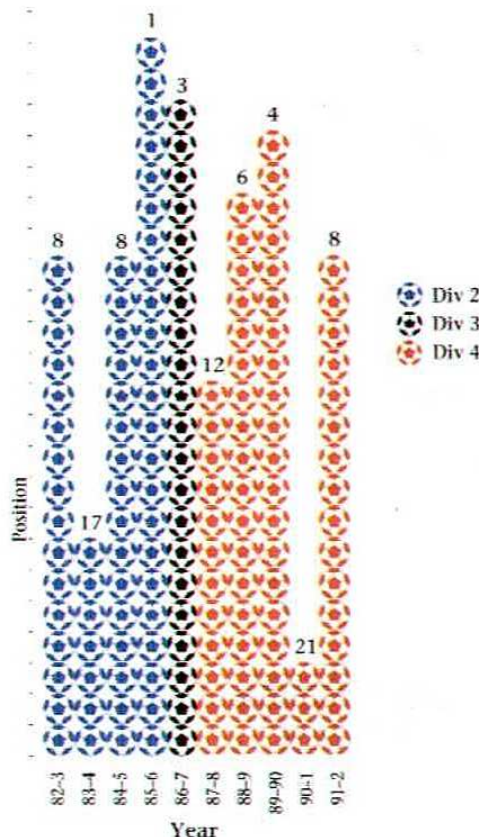


Glen Hoddle, arguably the most gifted footballer England has produced in recent times, started his league career with Tottenham Hotspur in 1976. He went on to make 480 appearances for the north London club, winning FA Cup and UEFA Cup honours along the way as well as 53 England caps.

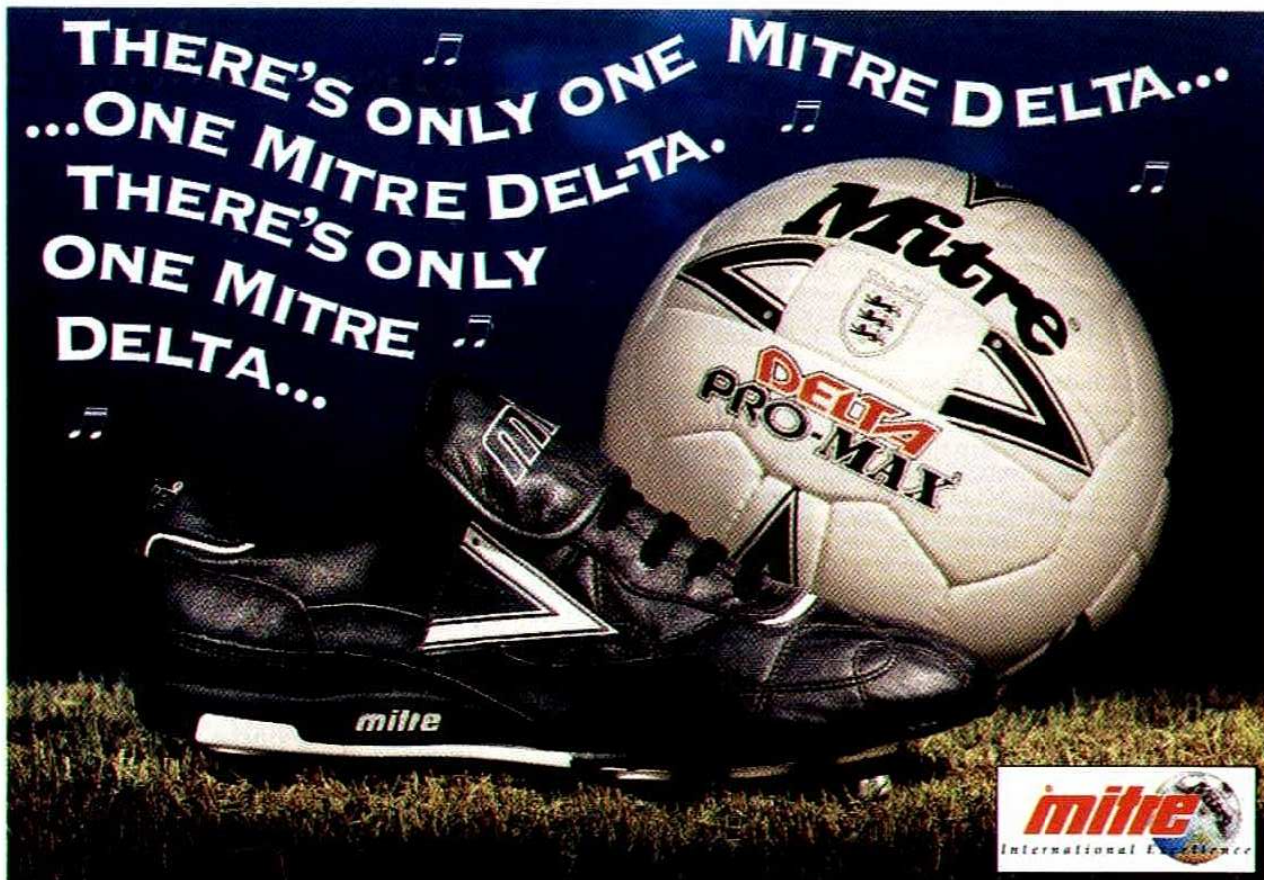
He left Tottenham after 12 years service to join up with Mark Hately at AC Monaco, a winning championship medal in his first season there. His career in France came to an end in 1990 after a prolonged knee injury and he returned to England, training with Chelsea to stay fit.

He joined Swindon as player/manager in April 1991, and has now converted from midfielder to sweeper. His refreshing style of total football has paid dividends for the west country club, who are now challenging for Division One honours.

Swindon Town 10 year record



THERE'S ONLY ONE MITRE DELTA...
...ONE MITRE DELTA.
THERE'S ONLY
ONE MITRE
DELTA...



mitre
International Excellence

Mitre Sports International Ltd., Bay Hall Works, Birkby, Huddersfield, West Yorkshire HD1 5AJ. Tel: (0484) 537488 Fax: (0484) 530042



The Flower Shop
Flowers for all occasions
34 STUART STREET, LUTON BEDS.
Telephone: Luton 422796
"Say it with Flowers"

Meet the real David Greene



THE PERSON BEHIND THE PLAYER

Name: David Greene

Birthplace: Luton

Height: 6ft 4ins

Weight: 14st

Signed from: Apprentice

Luton Town debut: v Grimsby Town (a), Division One 13.3.93.

International honours: Youth and under-21 caps for the Republic of Ireland.

Family: Mum, Dad and brother Stephen.

Car: Volvo

Starsign: Scorpio

Top television programme: I like most comedies, but The Fresh Prince of Bel Air is my favourite.

Top television commentator: Andy Gray. He is very enthusiastic and knows exactly what he is talking about.

Best recent film/video seen: A Few Good Men has a good storyline and good acting.

Hobbies: I like playing squash and also enjoy a round of golf. At present, my handicap is 18.

Who did you support as a boy: Luton, because they are my home town club.

Favourite away ground and why: Highbury has excellent facilities, a good playing surface and is the best ground in England.

Boots worn: Adidas

What qualifications did you get at school and what would you be doing now if you were not a footballer: I passed 5 'O' Levels in English, Maths, PE and two in Science. I have always wanted to become a pilot if I didn't play football.

What has been the highlight of your career so far in football: Being involved with the first-team at Luton and also gaining international honours for Eire.

Who are your favourite players past and present: Mark Lawrenson used to look so controlled and classy when he played in defence for Liverpool and the same can be said of Glenn Hoddle today at Swindon.

What piece of advice would you give to any young footballer hoping to make the grade: That's a hard question for me to answer because I am still trying to make it myself, but I would advise youngsters to train hard and keep working at your game at all times.

What young Town player do you tip to make the grade in the coming seasons: Paul McLaren. He is only a schoolboy, but he looks very promising.

What are your main ambitions in football: To make a good living for myself and to stay in the game for a long time.





Autograph

David Greene

EXECUTIVE MEMBERS

KENILWORTH SUITE

Anachem Ltd
Mrs E Bain
Blakey Engineering Company Ltd
CBC Print Ltd
Mr G. Chamberlain
Fisher Frozen Foods Ltd
Flitwick Oil Company Ltd
F & T Goodwin Ltd
Mr D Hales
Handscombe Financial Services Ltd
R.W. Harvey & Son
Holmes Commercial
Mr P Laycock
Seamarks Coach Travel
Wilton Truck Rental Plc
Radley Shaw
Origination

CLUB 82

T.J. Aldridge Builders
Bervale Meade Insurance Brokers
Bevangrace Ltd
Broad Street Print
J.S.B. Business Forms
Nordic Supplies
Mr F.W. Pearce
Mr J. Peters
E.C.J. Shorey Travel
Space Display Systems
David C. Rutt
Techno Sign Ltd

INDIVIDUAL BOX HOLDERS

Mr Malcolm Eade
Mr Roger Eade
Mr R. Pinney

EXECUTIVE BOXHOLDERS



Hurry and book your place on the coach to Millwall

JUNIOR HATTERS WITH

RICHARD HARVEY

Welcome to this evening's game with Swindon Town. We also give the Junior Robins a welcome as they are here watching tonight's game with us.

On Saturday, we will be entertaining the junior supporters from Bristol Rovers. If you would like to play football for the Junior Hatters that day, call into the Kenilworth Road Club Shop to put your name down and find out the venue where you will be playing.

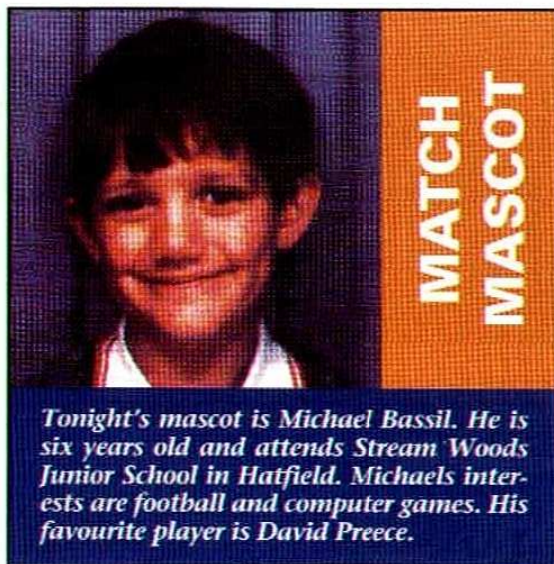
Do not forget to enter our Easter egg competition. I am going to give away 24 Easter eggs to the first 24 Junior Hatters drawn out of a hat who can give me the correct answers to this question:

Name the football clubs that the following ex-Luton players now play for: Steve Foster, Mal Donaghy, David Oldfield and Tim Breacker.

SPOT THE DIFFERENCE



Can you spot the 10 differences between the two pictures?



Tonight's mascot is Michael Bassil. He is six years old and attends Stream Woods Junior School in Hatfield. Michael's interests are football and computer games. His favourite player is David Preece.

Send your entry, along with your membership number, to: Easter Egg Competition, Luton Town FC, Kenilworth Road Stadium, 1 Maple Road, Luton LU4 8AW. The closing date is Friday, April 2, 1993.

We have had a good response for the coach trip to Millwall on March 24. Places for the coach are nearly fully-booked. It will leave from the top of Oak Road at 5.30 pm. The price is £4.00 juniors and £5.00 parents, which includes your ticket to the match. Remember, it will be the last time you will see Luton play at The Den because Millwall are moving to a new ground next season.

If you would like to take one of the few remaining places available, please book in the Club Shop after tonight's match.

Tonight's lucky Junior Hatters membership number is 1144.....DAVID ROLY. David wins two free tickets to one of our home games this season. To claim your prize, please call into the Club Shop with your membership card.

SOCCARTOON



FAIR FARES FOR LUTON TOWN F.C.

*Special half price tickets for
members of Luton Town
on Match Days.*

HOME We offer ½ price travel on all local
bus services operated by Luton &
District. **GAMES**

GAMES Take our 757 express coach from
Luton to London for a direct route
and frequent friendly service ½ price
for Luton Town Members! **AWAY**

RECESSION BUSTER

£1.00

OFF-PEAK RETURN CONTINUES...

...as Luton & District Transport
plays its part in helping both it's
passengers and the stores of
Luton and Dunstable to beat
the recession.

£1.00 Return Fare valid for journeys
within the Luton & Dunstable area.
Tickets must be purchased from the
driver between 0900-1600 Mondays to
Saturdays. Return Journeys may be
taken anytime on day of issue. Further
reductions for children (up to and includ-
ing 13 years of age) to 75p Mondays-
Fridays and 50p Saturdays and school
holidays (excluding Bank holidays).

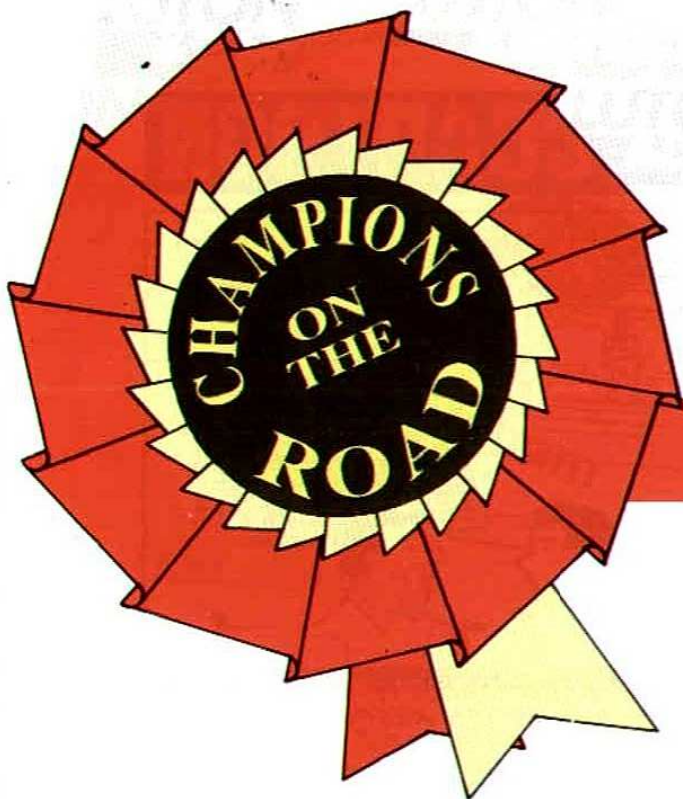
RECESSION BUSTER

We operate buses in most parts of the
Home Counties.

For further information about your local
services please telephone your nearest bus
station or garage.

LUTON & DISTRICT

Luton - Dunstable - Aylesbury - Leighton
Buzzard - Slough - Chilterns - Lee & District -
Red Rover - Stevenage - Hitchin - Hemel
Hempstead - Watford



Easter holiday soccer courses announced



AROUND THE TOWN

SUCCESSFUL COURSES CONTINUE

The Town are holding the latest in their successful series of holiday soccer courses on Thursday, April 8 and Friday, April 9, 1993 at the Electrolux Training Ground in Oakley Road.

The course will run from 10.00 am - 3.00 pm on both days and will include: a full coaching programme run by qualified F.A. Coaches; fun and games; prizes for the players with the best attitude; and guest appearances by Luton Town players and staff.

The price for the two day course will be £12.00 and an application form can be obtained by calling into the LTFC reception or by calling (0582) 411622.

Running in conjunction with the above course is a specialist goalkeepers' course. This will be held at the same venue at the same time and will again cost £12.00 for the two-day course.

COMMUNITY DIARY

Community Liaison Officer Gary Hooper is organising a community golf day on April 15 at the South Beds Golf Club. All the Town first-team players will be present and the tee-off time will be 12.00 o'clock.

On Sunday, April 25, Whitbread Beer's 'Whitbread in the Community' scheme will be hoping to cover the entire Kenilworth Road pitch with blankets and sheets. "Every blanket and sheet which will help cover the pitch will be donated to local charities," said spokesperson Penny Knubley. "We are looking to receive 2,500 blankets to help us in our efforts."

From August 16 - August 19, the Town will be holding a residential coaching fun week at

Berkhamstead Boys' School, Herts. The cost of the week will be £160, inclusive of accommodation and three meals a day.

If you require further information on any of the events listed above, please contact Gary on (0582) 411622.

HAPPY BIRTHDAY

We extend our congratulations to Darren Salton who celebrated his 21st birthday yesterday. Darren is currently recovering from his car accident in November, but regularly contacts the club and extends his best wishes to everyone. We also send birthday greetings to Julian James who celebrates his 23rd birthday on Monday.

F.A. CALL-UPS

Youth team players Neil Butler, Matthew Woolgar and Paul McLaren were all selected to represent the Football Association under-17 side against the English Independent Schools side last week. "This was a tremendous achievement for the three lads, especially Paul who is a year below all the rest," said youth development officer Paul Lowe.

ASSOCIATE SCHOOLBOY SIGNING

We welcome 14-year-old goalkeeper Nicholas Webb from Stevenage who has joined the club on associate schoolboy forms. Nicholas has trained with the club for three years at our F.A. Centre of Excellence at Stevenage and Luton. He attends Barclay School in Stevenage and has represented Herts County Schools.

KEEPERS HAVE A GREAT TIME

Pictured are some of the goalkeepers who attended our recent goalkeepers' course at the Electrolux Training Ground. Former Town goalkeeper Richard Watkins put the boys through their paces and gave them all helpful hints and advice. The boys also had the chance to meet and watch the first-team train. Details of the next course are elsewhere on this page.



Robbin' the Robins



BACK TRACKING BY ROGER WASH

Although we have not clashed with today's visitors Swindon Town with great regularity since the War, our meetings go back to our earliest times both in the Southern League and Football League.

Our first Football League meeting was also, coincidentally, our debut in the newly formed Division Three and we travelled to Swindon on 28th August 1920 full of confidence - only to return with a 9-1 thrashing! When the return was played a week later only five Luton players had retained their places,

with the shake up having the desired effect as the Town won 2-0 courtesy of goals from Sid Hoar and Ernie Simms.

In the following season the Town started off rather well, and by Christmas were challenging for promotion. The 2-1 win over Swindon on 27th December drew a crowd

of 15,671 to Kenilworth Road, a record League attendance at the time and not bettered for a further 14 years.

Results tended to favour the home side throughout the 1920s and 1930s, although it was not for lack of trying that the Town came away from the County Ground without a win. In 1928/29 we were one goal down near the end, decided to chase the game, and ended up losing 4-2.

In 1929/30 the Town went ahead against the run of play, via Andy Rennie, and then saw Swindon's Law carried off with a dislocated shoulder. Finally, the chance of a win at Swindon looked promising but the home side fought back to equalise.

Swindon had an equally poor record at Luton, managing only two draws throughout the 1920s and conceding 24 goals in the process. They started the next decade off in the same way, being on the receiving end of a 4-0 thrashing in 1930/31 which included the 100th League goal scored by that prolific marks-

Luton are pictured in action against Swindon Town at Kenilworth Road in 1920.



minute goal from George Stephenson secured a point in a 2-2 draw, but in return three weeks later, the Town were rampant scoring three goals in fifteen minutes. Joe Payne went on to hit a hat trick in that game, which finished 5-1, with his third goal bringing his personal tally for the season to 50.

The teams did not meet again until 1968/69 with the Town back in Division Three, and two hard fought games resulted in a 2-0 victory for us at Kenilworth Road watched by a crowd of 17,250. The return finished

scoreless but was witnessed by another large attendance of 18,909.

Swindon were promoted at the end of that season, but we followed soon after, and our final meetings took place in Division Two ending in 1973/74 with the Robins' relegation.

John Aston and Peter Anderson were on target for the Town in the 2-1 win at Kenilworth Road and Barry Butlin scored both Luton goals in a 2-0 victory at Swindon, watched by a crowd of only 2600 at the time of the 'three



It happened 5 years ago:-
15/3/88 - A comprehensive 4-0 beating of Coventry City came hot on the heels of our FA Cup sixth round victory over Portsmouth.



It happened 10 years ago:-
12/3/83 - A goal from Ricky Hill secured a surprise 1-0 win at Nottingham Forest. This was our first league win for seven weeks.



It happened 15 years ago:-
13/3/78 - Goals from Alan West, Ron Futchter, Phil Boersma and Lil Fuccillo gave the Town a comfortable 4-0 win against struggling Blackpool.



It happened 20 years ago:-
17/3/73 - In what should have been one of the biggest days in the club's history, the Town put on a mediocre performance in losing 2-0 at Sunderland in an FA Cup quarter-final.

PREVIOUS ENCOUNTERS

	P	W	D	L	F	A
Home	22	15	5	2	57	24
Away	22	3	8	11	23	45
Total	44	18	13	13	80	69

For the full Match Report, read —

Brian Swain's SPORTSVIEW

IN THE Luton News



5 pages of Sport Every Wednesday

Luton Town Clubcall 0898 12 11 23



Helping the most important people in football

Football is much more than a game of 90 minutes. Every day clubs throughout Britain are providing recreational and sporting opportunities for their local communities.

Much of this has been achieved with the help of the Football Trust. As part of its commitment to Football, The Trust has granted £4M to set up the National Football and Community Development Scheme.

Bringing club and community together, Trust-backed initiatives have provided a variety of local amenities, including:

- Artificial pitches for local teams
- Coaching for youngsters
- Support for women's football
- Facilities for people with disabilities

The Football Trust is helping the game at all levels.



THE FOOTBALL TRUST

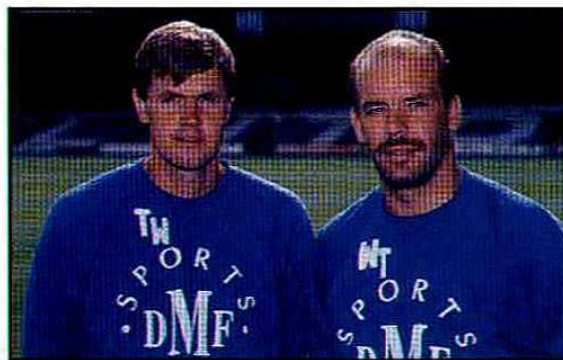
Helping the game

828 AM
Chiltern Radio
SUPERGOLD

*for the greatest Hits of All Time
and Unrivalled Daily Sports News!*

SUPERGOLD 828 AM
in Herts, Beds & Bucks

Youth team move into the top five



RESERVES AND YOUTH BY TERRY WESTLEY & WAYNE TURNER

Neville Ovenden Football Combination 1992/93 League Table

	P	W	D	L	F	A	Pts
Chelsea	27	15	8	4	60	36	53
Millwall	26	14	6	6	47	26	48
Crystal Palace	24	13	6	5	50	29	45
Wimbledon	27	13	6	8	43	27	45
Ipswich Town	27	12	5	10	43	44	41
Tottenham Hotspur	24	10	10	4	47	21	40
Southampton	23	11	7	5	39	25	40
Oxford United	27	10	10	7	38	44	40
Watford	27	10	9	8	42	44	39
Q.P.R.	25	10	8	7	41	32	38
Charlton Athletic	27	10	5	12	35	40	35
Arsenal	25	9	7	9	45	36	34
West Ham United	27	9	5	13	38	40	32
Swindon Town	26	7	8	11	36	41	29
Norwich City	25	7	8	10	45	51	29
LUTON TOWN	25	7	5	13	28	46	26
Portsmouth	26	7	5	14	31	50	26
Brighton & H.A.	25	7	4	14	25	54	25
Bristol City	25	5	8	12	29	41	23
Fulham	26	4	4	18	18	53	16

Neville Ovenden Football Combination Fixtures Season 1992/93

Mon 17 Aug	Millwall	1-2	Mon 19 Jan	Arsenal	0-3
Mon 24 Aug	Fulham	2-1	Wed 27 Jan	Ipswich Town	3-2
Mon 31 Aug	Queens Park Rangers	0-0	Mon 1 Feb	Charlton Athletic	0-4
Mon 7 Sept	Crystal Palace	1-4	Thur 4 Feb	Chelsea	1-4
Mon 14 Sept	Tottenham Hotspur	1-4	Fri 12 Feb	Norwich City	0-2
Wed 7 Oct	Brighton & Hove Albion	1-1	Tues 16 Feb	Fulham	2-0
Mon 12 Oct	Oxford United	2-3	Tue 23 Feb	Watford	2-3
Mon 26 Oct	Brighton & Hove Albion	1-2	Thu 25 Feb	Arsenal Town (BPC SF)	3-1
Thur 29 Oct	Stotfold (BPC)	4-0	Mon 1 Mar	Swindon Town	2-1
Wed 4 Nov	Portsmouth	2-2	Tue 9 Mar	Oxford United	0-0
Mon 9 Nov	Wimbledon	1-0	Mon 16 Mar	Ipswich Town	
Thur 12 Nov	Portsmouth	1-1	Mon 23 Mar	Watford	
Mon 23 Nov	West Ham United	2-0	Mon 29 Mar	Millwall	
Thur 10 Dec	Leighton Town (BPC)	3-1	Mon 5 Apr	Oxford United	
Mon 14 Dec	Southampton	1-1	Wed 14 Apr	Southampton	
Thur 17 Dec	Wimbledon	0-1	Mon 19 Apr	Chelsea	
Mon 21 Dec	Swindon Town	1-2	Wed 28 Apr	Charlton Athletic	
Tue 29 Dec	Arsenal	1-0	Mon 3 May	West Ham United	
Tue 5 Jan	Bristol City	0-3			

South East Counties League Division Two 1992/93

	P	W	D	L	F	A	Pts
Wimbledon	25	19	3	3	66	20	41
Bristol City	22	14	2	6	45	27	30
Brentford	24	11	8	5	37	24	30
Southampton	22	8	8	6	25	24	24
LUTON TOWN	21	11	0	10	46	40	22
Brighton & H.A.	20	9	4	7	35	33	22
AFC Bournemouth	20	8	6	6	26	27	22
Tottenham Hotspur	22	9	4	9	39	44	22
Crystal Palace	23	9	3	11	35	30	21
Reading	23	6	5	12	34	49	17
Swindon Town	22	6	4	12	25	42	16
Oxford United	22	5	4	13	37	48	14
Bristol Rovers	21	4	5	12	27	50	13
Colchester United	19	6	0	13	18	37	12

Match Report

Bristol Rovers 1 Luton Town 1

South East Counties League Division Two,
Saturday, March 6, 1993.

The Town's youth team moved into the top five of the South East Counties League with an impressive win at Bristol. John Hartson scored twice to take his season's tally to 29 and the result left coach Terry Westley delighted. "We played very well, considering the fact that we had four schoolboys in the side," he stated. "The only disappointment to the whole game was that we let them score with only a couple of minutes to go." **Team:** Watkins, Philp, Palmer, McLaren, Rioch, Gibb, Woolgar 1, Ryan, Hartson 2, Butler, Campbell. **Subs:** Issott, Goodridge.

Swindon Town 1 Luton Town 2

Neville Ovenden Football Combination,
Monday, March 1, 1993.

Our Reserve team also continued their recent fine run with a 2-1 victory at Swindon. Coach Wayne Turner was very pleased with the performance, which was played in an atrocious blizzard. He said: "We won the game, but in all honesty, it could have gone either way with both sides missing chances. Early on we could have been 3-0 up with Williams looking strong, but we went 1-0 down. We then made some changes and came back strong to win the game."

Team: Petterson, Linton, Rioch, Rees, Greene, Campbell, Williams 1, Skelton, Hartson, Thorpe 1, Gentle. **Subs:** Flain, Ryan.

South East Counties League Division Two Fixtures Season 1992/93

Sat 15 Aug	Bristol Rovers	8-0	Tue 10 Nov	Tottenham Hotspur (SFC)	2-1
Sat 22 Aug	Reading	4-1	Sat 14 Nov	Bristol City	4-1
Sat 29 Aug	Colchester United	1-2	Sat 28 Nov	Swindon Town	1-4
Sat 5 Sep	Tottenham Hotspur	2-0	Tue 8 Dec	W.B.A. (AFC2)	1-2
Thu 10 Sept	Chelsea (SFC 1)	1-1	Wed 6 Jan	Coventry City (SFC3)	2-1
Sat 12 Sept	AFC Bournemouth	0-2	Sat 9 Jan	Tottenham Hotspur	4-2
Sat 19 Sept	Charlton Athletic (SECLC)	10-3	Sat 23 Jan	Brentford	3-2
Sat 26 Sept	Brentford	0-2	Sat 30 Jan	Oxford United	1-6
Thu 1 Oct	Chelsea (SFC 10)	3-2	Sat 6 Feb	Southampton	0-3
Sat 3 Oct	Oxford United	1-2	Sat 13 Feb	Crystal Palace	0-5
Sat 10 Oct	Southampton	0-1	Sat 20 Feb	Wimbledon	3-2
Sat 17 Oct	Crystal Palace	0-3	Sat 27 Feb	Brighton & H.A.	3-0
Wed 21 Oct	Southend United (SFC)	4-2	Sat 6 Mar	Bristol Rovers	4-1
Sat 31 Oct	Wimbledon	1-3	Sat 13 Mar	Bristol City	
Wed 4 Nov	Preston Vale (AFC 1)	4-1	Mon 22 Mar	Millwall	
Sat 7 Nov	Swindon Town	3-1	Sat 27 Mar	Brighton & H.A.	

Luton Town F.C.

KIT SPONSORS

RICHARD HARVEY
ECJ Shorey Travel

DES LINTON
Simkins Solicitors of
Baldock and Sandy

CERI HUGHES
Mark Varney Investments

IAN BENJAMIN
Bobbys Travel Club,
Committee and Members

JOHN DREYER
Milton Keynes Branch of
the Luton Town Supporters Club

CHRIS KAMARA
Tim Arnold

ANDY PETTERSON
Simorg Ltd of Luton

JAMIE CAMPBELL
Lea Manor School
Luton

DAVID PREECE
Mr K. Craven of
Shaldon Court Newsagents

TREVOR PEAKE
Bennetts Gate Bakery
of Hemel Hempstead

SCOTT OAKES
Profile Systems and Networks Ltd

MARVIN JOHNSON
Cornish Newsagents
Leighton Buzzard

DARREN SALTON
Fastech Scotland

DAVID PLEAT
A-Top Management Services Ltd
Property Letting Service

PHIL GRAY
Coloramic Ltd of Sandy

CHRIS BROOKS
McLeod Warner Ltd

JULIAN JAMES
ECJ Shorey Travel

ALEC CHAMBERLAIN
RAH Design Ltd
Mark Nelson & Elaine Nelson

PAUL TELFER
5 Star Cars and Couriers Ltd

JASON REES
Wilton Vehicle Rental

MARTIN WILLIAMS
Leicester & Harpenden Hatters
Adrian Danes and Clive Garrett

DAVID GREENE
Katy and Phil Shaw



FOR PRICING, TELEPHONE THE
COMMERCIAL DEPARTMENT
ON 0582 411622

Luton Town Clubcall 0898 12 11 23

"Hatters" re-opens 20th March



COMMERCIAL FOCUS BY ANDY KING AND JOHN BUTTLE

Tonight we welcome our match sponsors and their guests, in our new Joe Payne sponsors lounge, Radley Shaw Limited who are a local family run printing business producing quality 2 and 4 colour work from their modern premises at Progress Business Park Luton. They offer a comprehensive services from initial visuals to the completed job.

Origination is the typesetting side of the business using the very latest technology backed up with over 30 years experience.

They also provide all desk top publishing services. We are pleased offer our support to Luton Town Football Club.

REMINDER TO SEASON TICKET HOLDERS

'HATTERS' opens it's doors for our home game with Bristol Rovers on March 20th Why not call in for a drink, snack or meal in a basket either prior to or after the game
Opening times (match days only)
Saturdays 12 noon - 2.30 pm Immediately after the game (bar opens 5 pm - 8 pm)
Midweek 6 pm - 7.15 pm only ENTRANCE VIA MAPLE ROAD BRIDGE.

WELCOME TO TONIGHTS MATCH BALL SPONSORS

G. Owen Ceramic Tiling was established in Luton in 1983 and moved its headquarters to Northampton in 1988. The company has expanded rapidly and now operates in more than 50 housing estates and, in addition, undertakes other commerical contracts. The company currently covers Bedfordshire, Hertfordshire, Northamptonshire, Oxfordshire and London.

FACE IN THE CROWD

Are you the face ringed at a recent Town game at Kenilworth Road? If you are, please ring the Ticket Office on (0582) 416976 to pick up your complimentary ticket for a Town home game this season!



Antony's Tailor

OF LONDON

THE MOST
ESTABLISHED
AND RELIABLE
TAILORS IN
LUTON

DRESS HIRE
LADIES AND GENTS
BESPOKE TAILORING



12 DUNSTABLE ROAD, LUTON,
BEDS OPPOSITE MAIN POST OFFICE
TEL: (0582) 424687

FAROE ISLES 1, AUSTRIA 0.

EUROPEAN CHAMPIONSHIPS 1990

USA 1, ENGLAND 0.

WORLD CUP FINALS 1950

WEST GERMANY 1 ALGERIA 2

WORLD CUP FINALS 1982

Arbroath 36, Bon Accord 0.

SCOTTISH CUP 1885

ARGENTINA...0 CAMEROON...1

WORLD CUP FINALS 1990

BANGOR 2 - NAPOLI 0

EUROPEAN CUP WINNERS CUP 1963

**FOR MORE PREDICTABLE RESULTS
SAVE WITH BARCLAYS.**

Shock upsets might be interesting in football, but when it comes to your hard earned cash you want a dead cert.

For a real result from your savings why not talk to Barclays?

We have a wide range of savings schemes, to suit your individual needs, no matter how large or small the amount you have to save. From youngsters with £1, to premium rate saving accounts like Capital Advantage, when you have £10,000 or more to invest.

Just ask at your local branch for details or phone our information line – free of charge – on 0800 400 100.

You can't go wrong with Barclays behind you.



Fans' forum



LUTON LINK

LUTON LINK have heard some disturbing rumbles amongst Town fans...Just when you think it is safe to come to a football match, you find yourself confronted by droves of supporters armed with that most lethal of weapons...a pocket radio!

Yes, believe it or not, you are not allowed into the ground with a radio. LUTON LINK have heard complaints from fans on the terraces of heavy-handed Police warning supporters that they are not allowed in with a radio.

According to the club, Football League regulations stipulate a number of things that you are not allowed in with. The League issue each club with a list of rules and regulations, which they are then obliged to display. Luton Town have produced graphic posters in order to increase awareness, but this cannot be working as neither we, nor some senior management,

have ever heard of radio's being banned!

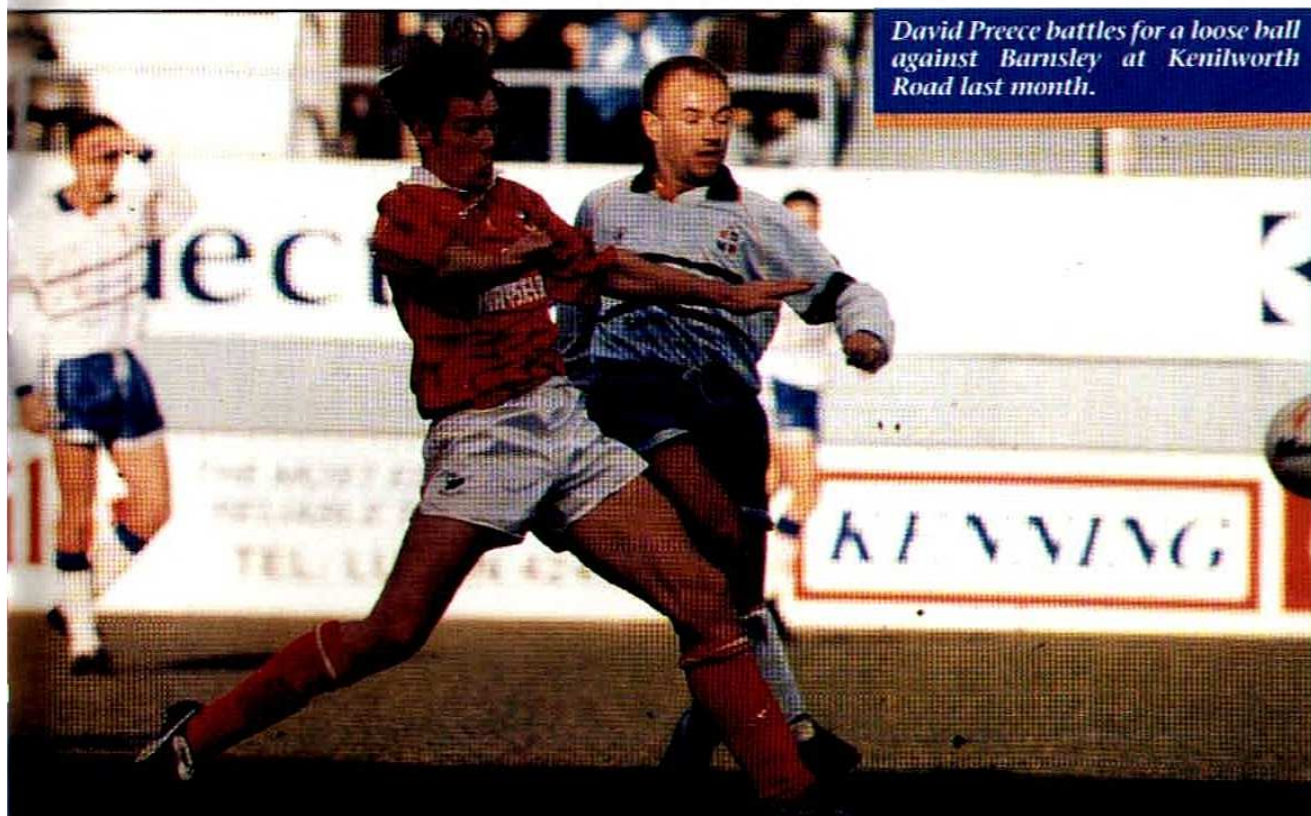
Posters can be found in and around the stadium clearly showing pictures of the offending items. Apart from the offending radio's, here are some of the other things you are not allowed to bring in: golfing umbrellas (Police please note that ordinary ones are!), flag poles, spray cans, glasses (the type you drink from), and many others. So take a look on your way out today, you may be in for a surprise. Meanwhile, turn the volume down...

GREETINGS FROM IRAQ

Dear Sir,

I am a keen follower of English football and my favourite teams are Luton Town and Nottingham Forest. I would like to correspond with Luton fans so that I can keep updated with all the latest events at Kenilworth Road.

Shehab Ahme (29), PO Box 7357, Haifa Street, Baghdad, Iraq.



David Preece battles for a loose ball against Barnsley at Kenilworth Road last month.

AND LUTON TOWN

- THE PERFECT MATCH

	F-A	Att	Pos	1	2	3	4	5	6	7	8	9	10	11	12	14	
Aug 15	Leicester City	1-2	17,428	16	Peterson	Linton	James	Kamara	Peake	Dreyer	(Oakes)	Hughes	Gray	Preece	CAMPBELL	(Claridge)	Salton
Aug 22	Bristol City	0-3	7,826	22	Peterson	Linton	(James)	Kamara	Peake	Dreyer	Claridge	Hughes	Gray	Preece	Campbell	(Oakes)	(Johnson)
Aug 29	Charlton Athletic	0-0	6,302	21	Peterson	Linton	James	Salton	Peake	Dreyer	Claridge	Hughes	(Gray)	Preece	Rees	(Oakes)	Campbell
Sept 2	Newcastle United	0-2	27,054	21	Peterson	Linton	James	Salton	Peake	Dreyer	Claridge	Oakes	Gray	Preece	(Rees)	Johnson	(Campbell)
Sept 5	Tranmere Rovers	3-3	6,881	23	Peterson	LINTON	James	Salton	Peake	Dreyer	CLARIDGE	OAKES	(Gray)	Preece	Rees	Johnson	(Campbell)
Sept 13	Brentford	2-1	7,310	19	Peterson	Linton	JAMES	Salton	Peake	Johnson	Claridge	Kamara	GRAY	Preece	Rees	Oakes	Campbell
Sept 15	Watford (A/C)	0-0	5,197	-	Peterson	Linton	James	Salton	Peake	Johnson	(Claridge)	Kamara	(Gray)	Preece	Rees	(Oakes)	(Campbell)
Sept 19	Birmingham City	1-1	8,481	21	Peterson	Linton	James	Salton	Peake	(Johnson)	CLARIDGE 2	Kamara	Gray	Preece	Oakes	(Rees)	(Campbell)
Sept 23	Plymouth Argyle (CCC2/1)	2-2	3,782	-	Peterson	Linton	James	Salton	(Peake)	(Johnson)	CLARIDGE 2	Kamara	Gray	Preece	(Rees)	(Oakes)	(Campbell)
Sept 26	Notts County	0-0	5,992	21	Peterson	Linton	James	Salton	Matthew	Dreyer	Claridge	Kamara	Gray	Preece	Oakes	(Rees)	(Campbell)
Sept 29	Bristol City (A/C)	1-1	2,538	-	Peterson	Linton	James	Salton	(Matthew)	Dreyer	CLARIDGE	Kamara	Gray	(Campbell)	Rees	(Oakes)	(Preece)
Oct 3	Portsmouth	1-4	7,954	22	Peterson	Linton	James	Salton	Oakes	DREYER	Claridge	Kamara	Gray	Preece	(Rees)	(Matthew)	(Campbell)
Oct 6	Plymouth Argyle (CCC2/2)	2-3	8,946	-	Peterson	Linton	(James)	Salton	(Peake)	Johnson	CLARIDGE	Kamara	Gray	PREECE	Rees	(Oakes)	(Dreyer)
Oct 10	Barnsley	0-3	5,261	23	Peterson	(Linton)	James	Salton	Johnson	Dreyer	Claridge	Kamara	Gray	Preece	(Rees)	(Oakes)	(Matthew)
Oct 17	Derby County	1-3	8,848	23	Peterson	Linton	James	Salton	JOHNSON	Matthew	Claridge	Kamara	Gray	Preece	(Oakes)	(Campbell)	Harvey
Oct 24	Peterborough United	3-2	7,125	22	Peterson	Linton	James	Salton	Johnson	Matthew	Claridge	Kamara	(Preece)	GRAY 2	TELFER	(Oakes)	Greene
Oct 31	Southend United	2-2	7,256	22	Peterson	Linton	JAMES	Salton	Johnson	Peake	Claridge	Kamara	Preece	GRAY	(Telfer)	(Oakes)	Dreyer
Nov 3	Cambridge United	3-3	5,716	22	Peterson	Linton	James	Salton	Johnson	Peake	Claridge	Kamara	Preece	GRAY 2	OAKES	Campbell	Greene
Nov 7	Grimsby Town	1-4	6,928	22	Chamberlain	(Linton)	James	Salton	Johnson	Peake	(Claridge)	Kamara	Rees	GRAY	Oakes	(Campbell)	(Telfer)
Nov 14	Oxford United	0-4	5,760	22	Chamberlain	Linton	James	Salton	Johnson	Peake	Telfer	Claridge	(Rees)	Gray	Preece	(Oakes)	Dreyer
Nov 21	Millwall	1-1	8,371	23	Chamberlain	Dreyer	James	Salton	(Hughes)	Peake	(Telfer)	Benjamin	Rees	GRAY	Preece	(Oakes)	(Johnson)
Nov 28	Watford	2-0	8,341	21	Chamberlain	Dreyer	James	Johnson	Hughes	Peake	(OAKES)	BENJAMIN	Rees	Gray	Preece	(Williams)	Skelton
Dec 5	Bristol Rovers	0-2	6,245	22	Chamberlain	Dreyer	James	Johnson	(Hughes)	Peake	Oakes	(Benjamin)	Rees	Gray	Preece	(Williams)	Linton
Dec 12	Wolverhampton Wanderers	2-1	13,932	20	Chamberlain	Dreyer	James	Johnson	Hughes	Peake	(Oakes)	Telfer	(Rees)	GRAY 2	Preece	(Benjamin)	(Linton)
Dec 19	Sunderland	0-0	8,286	20	Chamberlain	DREYER	James	Johnson	(Hughes)	Peake	Telfer	(Rees)	Benjamin	Gray	Preece	(Oakes)	(Benjamin)
Dec 28	West Ham United	2-2	18,786	20	Chamberlain	DREYER	James	Johnson	HUGHES	Peake	(Williams)	Telfer	(Rees)	Gray	Preece	(Oakes)	(Benjamin)
Jan 9	Birmingham City	1-2	9,601	22	Chamberlain	Dreyer	James	Johnson	HUGHES	Peake	(Oakes)	Telfer	Rees	Gray	Preece	(Williams)	Benjamin
Jan 16	Notts County	0-0	6,729	22	Chamberlain	Dreyer	(James)	Johnson	Hughes	Peake	Telfer	(Benjamin)	Rees	Gray	Preece	(Oakes)	(Williams)
Jan 19	Bristol City (FAC3)	2-0	6,692	-	Chamberlain	Dreyer	James	(Johnson)	HUGHES	Peake	Telfer	(Benjamin)	Rees	GRAY	Preece	(Oakes)	(Harvey)
Jan 23	Derby County (FAC4)	1-5	9,170	-	Chamberlain	Dreyer	James	Johnson	Hughes	Peake	TELFER	(Benjamin)	(Rees)	Gray	Preece	(Oakes)	(Harvey)
Jan 27	Newcastle United	0-0	10,237	24	Chamberlain	Dreyer	James	Johnson	Hughes	Peake	Telfer	(Williams)	(Rees)	Gray	Preece	(Oakes)	(Benjamin)
Jan 30	Bristol City	0-0	8,877	24	Chamberlain	Dreyer	James	Johnson	Hughes	Peake	Telfer	(Williams)	(Rees)	Gray	Preece	(Oakes)	(Benjamin)
Feb 6	Leicester City	2-0	9,140	21	Chamberlain	Dreyer	James	JOHNSON	Hughes	Peake	Telfer	(Williams)	(Oakes)	GRAY	Preece	(Rees)	(Benjamin)
Feb 9	Brentford	0-0	7,248	21	Chamberlain	Dreyer	James	Johnson	Hughes	Peake	Telfer	Williams	Oakes	Gray	Preece	Rees	Benjamin
Feb 13	Tranmere Rovers	2-0	8,723	20	Chamberlain	Dreyer	James	JOHNSON	Hughes	Peake	Telfer	Dixon	Oakes	GRAY	Preece	Rees	Benjamin
Feb 20	Charlton Athletic	1-0	8,443	19	Chamberlain	Dreyer	James	Johnson	Hughes	Peake	Telfer	DIXON	Oakes	GRAY	Preece	Rees	(Williams)
Feb 27	Barnsley	2-2	7,595	19	Chamberlain	Dreyer	James	Johnson	(Hughes)	Peake	Telfer	Dixon	OAKES	GRAY	Preece	(Hughes)	(Williams)
Mar 6	Portsmouth	1-2	10,457	20	Chamberlain	Dreyer	James	Johnson	(Rees)	Peake	Telfer	Dixon	Oakes	GRAY	PREECE	(Rees)	Linton
Mar 9	Oxford United	3-1	6,687	17	Chamberlain	Dreyer	James	Johnson	(Williams)	Peake	Telfer	Dixon	OAKES	GRAY	Preece	(Williams)	(Rees)
Mar 13	Grimsby Town	1-3	5,193	18	Chamberlain	Dreyer	James	Johnson	(Hughes)	(Greene)	Telfer	Dixon	Oakes	GRAY	Preece	(Williams)	(Rees)
Mar 17	Swindon Town																
Mar 20	Bristol Rovers																
Mar 24	Millwall																
Mar 27	Cambridge United																
Apr 3	Watford																
Apr 7	Wolverhampton Wanderers																
Apr 10	Swindon Town																
Apr 13	West Ham United																
Apr 17	Sunderland																
Apr 24	Derby County																
May 1	Peterborough United																
May 8	Southend United																

DIVISION ONE LEADING GOALSCORERS

(all competitions)

Whittingham (Portsmouth) 36; Aldridge (Tranmere) 24; Blissett (Brentford) 23; Furlong (Watford) 20, Kitson (Derby) 20.

DIVISION ONE LEADING GOALSCORERS (all competitions)

Whittingham (Portsmouth) 36; Aldridge (Tranmere) 24;
Blissett (Brentford) 23; Furlong (Watford) 20,
Kitson (Derby) 20.

Luton Town F.C. Appearances and Goalscorers 1992-93

	League		Coca-Cola Cup		AI Cup		FA Cup	
	Apps	Goals	Apps	Goals	Apps	Goals	Apps	Goals
Ian Benjamin	5(5)	1	-	-	-	-	1	-
Jamie Campbell	2(7)	1	-(1)	-	1(1)	-	-	-
Alec Chamberlain	20	-	-	-	-	-	1	-
Steve Claridge	15(1)	2	2	3	2	1	-	-
Kerry Dixon	5	1	-	-	-	-	-	-
John Dreyer	26	2	-(1)	-	1	-	1	-
Phil Gray	34	17	2	-	2	-	1	1
Richard Harvey	-	-	-	-	-	-	-(1)	-
Ceri Hughes	19(1)	2	-	-	-	-	1	1
Julian James	34	2	2	-	2	-	1	-
Marvin Johnson	26(2)	3	2	-	1	-	1	-
Chris Kamara	12	-	2	-	2	-	-	-
Des Linton	16(3)	1	2	-	2	-	-	-
Damien Matthew	3(2)	-	-	-	1	-	-	-
Scott Oakes	19(14)	4	1(1)	-	-(2)	-	-(1)	-
Trevor Peake	28	-	2	-	1	-	1	-
Andy Petterson	14	-	2	-	2	-	-	-
David Preece	33	1	2	1	1(1)	-	1	-
Jason Rees	22(1)	-	1(1)	-	2	-	1	-
Darren Salton	15	-	2	-	2	-	-	-
Paul Telfer	19(1)	1	-	-	-	-	1	-
Martin Williams	6(7)	-	-	-	-	-	-	-

Barclays League Division One Table

	P	W	D	L	F	A	Pts	Av Att	Leading Goalscorers
Newcastle United	35	21	8	6	63	31	71	29,321	Kelly 16, Peacock 12
West Ham United	35	19	9	7	61	32	66	15,533	Morley 17, Allen 14
Swindon Town	34	17	9	8	59	43	60	10,065	Maskell 14, Taylor 7
Portsmouth	35	17	9	9	58	39	60	11,749	Whittingham 31
Millwall	35	16	12	7	55	35	60	8,541	Moralee 13, Goodman 10
Leicester City	34	16	7	11	51	46	55	14,673	Lowe 7, Joachim 6, Davison 6
Tranmere Rovers	33	16	6	11	56	45	54	7,348	Aldridge 21, Nevin 9
Grimsby Town	34	15	6	13	51	45	51	5,672	Groves 10, Mendonca 8, Rodger 8
Charlton Athletic	35	13	12	10	42	34	51	7,221	Pardew 9, Nelson 6
Derby County	34	14	6	14	53	43	48	16,286	Kitson 12, Simpson 9
Wolverhampton W	35	12	12	11	48	43	48	13,387	Bull 11, Mutch 7, Burke 7
Peterborough United	33	13	8	12	43	48	47	7,582	Adcock 13, Philliskirk 9
Barnsley	34	13	7	14	46	41	46	6,504	Biggins 11, O'Connell 6
Watford	35	11	9	15	50	62	42	7,766	Furlong 18, Nogan 10
Sunderland	33	11	9	13	36	42	42	16,878	Goodman 8, Rush 6, Cunningham 6
Oxford United	34	9	12	13	30	43	39	6,065	Durmin 11, Magilton 9
Notts County	34	9	11	14	42	37	38	8,363	Smith 7, Draper 7
LUTON TOWN	34	8	14	12	38	53	38	7,979	Gray 17
Brentford	35	10	7	18	40	53	37	8,521	Blissett 14, Allon 5
Bristol City	34	9	9	16	37	59	36	10,902	Cole 12
Cambridge United	34	8	12	14	35	52	36	5,483	Claridge 6, White 4, Butler 4
Southend United	34	8	11	15	36	42	35	4,456	Collymore 9, Ansah 5
Birmingham City	34	8	8	18	30	56	35	11,045	Frain 5, Gayle 3
Bristol Rovers	35	8	7	20	40	70	31	5,986	Stewart 10, Taylor 9

(up to and including 13.3.93)

Matchday
music is supplied
by HMV Stores,
Arndale Centre,
Luton.



THE MAN IN THE MIDDLE: ROGER WISEMAN (BOREHAMWOOD, HERTS)

A marketing manager, Roger is married with two children. He commenced refereeing in 1972 in the Bromley and District League and progressed via the Kent Amateur and Isthmian Leagues, to the full League list in 1986. He lists his hobbies as cricket, golf and snooker.

VOUCHER NUMBER 20

Team Check

LUTON TOWN

Colours: White/Blue Shirts,
Blue/White shorts

Manager: David Pleat

Alec Chamberlain
John Dreyer
Julian James
Marvin Johnson
Ceri Hughes
Trevor Peake
Paul Telfer
Kerry Dixon
Scott Oakes
Philip Gray
David Preece

1
2
3
4
5
6
7
8
9
10
11
12
14

SWINDON TOWN

Colours: Red Shirts,
Red Shorts

Manager: Glenn Hoddle

Fraser Digby
Nicky Summerbee
Paul Bodin
Glenn Hoddle
Colin Calderwood
Shaun Taylor
Paul Hunt
Ross McLaren
David Mitchell
Martin Ling
Steve White

REFEREE: R.M. Wiseman (Borehamwood, Herts)

LINESMEN: P.D. Hardy (yellow trim)

J.F. Thompson (red/yellow trim)

FOURTH

OFFICIAL: L.J. Evans



Official kit sponsor



Official ball sponsor

IT'S IN A LEAGUE OF ITS OWN.



VAUXHALL *Once driven, forever smitten*



VAUXHALL IS BACKED BY THE WORLDWIDE RESOURCES OF GENERAL MOTORS. CAR SHOWN ASTRA GSI